

Working with Alexa

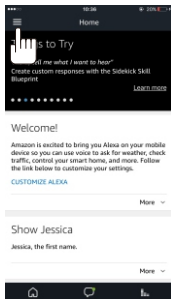
1. Note before operation

- You need to have an Echo Show, and make sure it's online
- Please set up your cameras according to the user manual
- Please modify the camera nickname, nickname should be in English like: bedroom, office, home, house, baby, garden, shop etc.

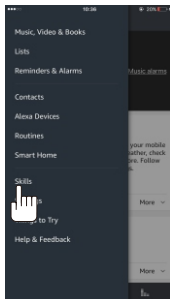
2. Connect the camera to Alexa

Please open your Alexa APP, register an account and sign in, then follow the steps as below:

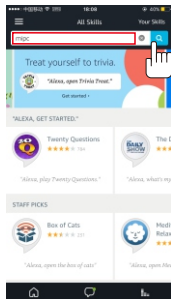
① Enter the Menu on the upper left corner



② Select "Skills"



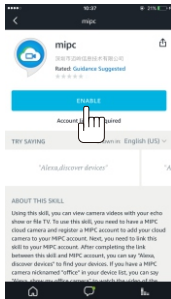
③ Search "MIPC"



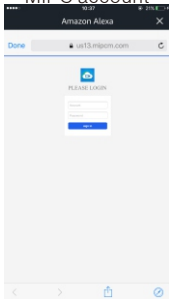
④ Tap on "MIPC" skill



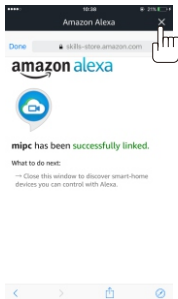
⑤ Tap on "ENABLE"



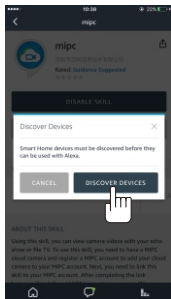
⑥ Sign in to your MIPC account



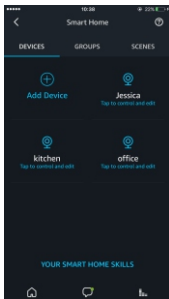
⑦ Close the "successfully linked" page



⑧ Tap on "DISCOVER DEVICES"



⑨ Check your device list



3. Voice Command supported by MIPC

Play live video of the camera

{Alexa}, {show} {bed room}

Note : Show could be changed to Hide, which command to stop playing live video.