



Contact us

E-mail us to support@hviewsmart.com

Official Website www.hviewsmart.com/support

To register, please like us on our Facebook

<https://www.facebook.com/HVIEW.Smart>

Receive free and exclusive discounted products to test and review.

IP POE Camera Quick Start Guide

Contents

1

Camera Connection Diagram

2

PC WEB - Live View

3

CMS Software - Live View

4

Accessing the camera using Smartphone/table

5

Third Party Device and Software Setup

6

Use App to Set Motion Detection alarms, Record, Playback



We have developed user-friendly products and documentation. You may download the software and manual from <http://www.hviewsmart.com/support-s2.html>

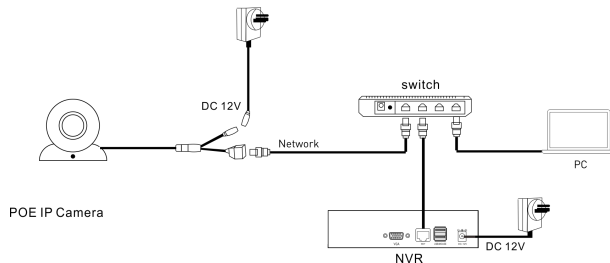


If you have any questions, you may refer to: <http://hview.kf5.com/hc/kb/category/1011641>



If you may need any technical support, please contact us at Support@hviewsmart.com

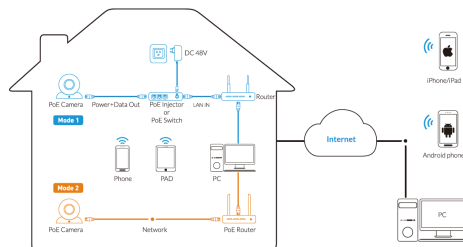
How to let the POE camera work
When you don't have POE terminal equipment ?



If your Terminal equipment isn't POE,
you need use 12V2A power supply to power IP Camera

1: Camera Connection Diagram

1.1 To PC/Phone/iPad

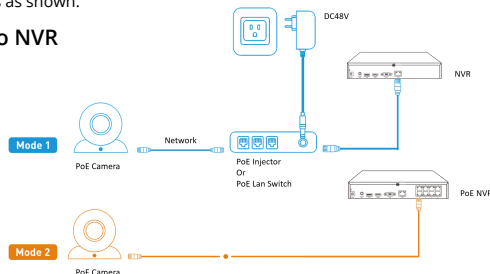


Attention: There are two methods of connection.

Method 1: For use with a non-PoE router, please connect the camera to a PoE switch or a PoE injector then plug switch/injector to the router as shown.

Method 2: For use with a PoE router, please connect the camera directly to the routers as shown.

1.2 To NVR



1. The camera supports connecting to any NVR that use the ONVIF standard protocol, or connecting to our NVR through private protocol. This allows users to view live video, playback video, and to save recorded data. To connect to an NVR, use an Ethernet cable to link the camera to an NVR through a PoE LAN Switch, or connect to an NVR's built-in PoE port.

2. Please follow the diagram below when connecting a camera to an NVR.

3. If there is a problem adding the camera, please make sure you put the correct username and password when adding the camera to the NVR. 4. Please refer to NVR's user manual for the details if there are problems with the NVR.

Please modify the cameras' IP address to be the same segment as the NVR LAN port.

The camera can work with the third-party NVR through ONVIF protocol. NVRs support plug and play without configurations.

1.3 Camera Access Information

To login to the system for the first time, use the following default IP address, username and password. Once you've successfully logged in, it is highly recommended to change the password for security reasons.

Default IP address: 192.168.1.120,

network mask: 255.255.255.0

Username: admin

Password: 12345

The default HTTP Stream:

<http://192.168.1.120/action/stream?subject=mjpeg&user=admin&pwd=admin>

HTTP Snapshot URL:

<http://192.168.1.120/action/snap?cam=0&user=admin&pwd=admin>.

You will be asked to login the camera using the correct username and password after 30 minutes inactivity.

It's strongly suggested that the camera's password should be changed periodically, and it should contain a combination of digits, characters and some special characters.

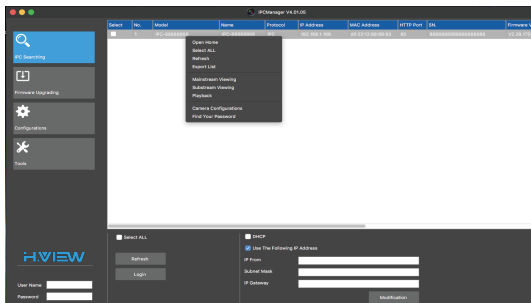
2: PC WEB-Live View

2.1 Quick Start using IPCManagerTool

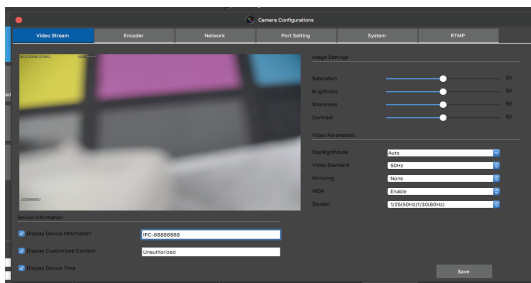
IPCManagerTool is designed for cameras searching and configurations in batch. User can use IPCManager to search the cameras, and then to make the quick configurations including modifying the IP address, modifying some parameters and playback etc.

IPCManager Tool can run on Windows/Linux/Apple MAC OS. Please get the software from the website or the CD included in the package, and check the details from the IPCManager User Manual.

- 1.Run IPCManager Tool on the PC. (Please be sure that the cameras are connected to the same network as the computer). The cameras in the network can be found by the tool and a list will be generated.
- 2.Right click on the camera you want to access.



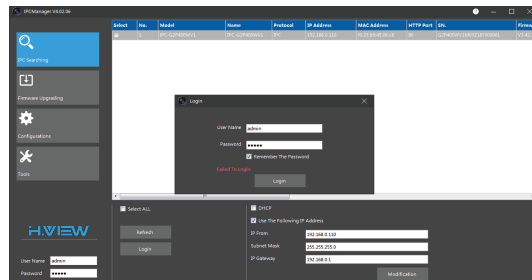
- 3.Please select "Open Home#", to open camera* s web interface using the default browser you specified in the computer.
- 4.You can select "Camera Configurations" to preview the camera's video and make quick changes to parameter settings like below.



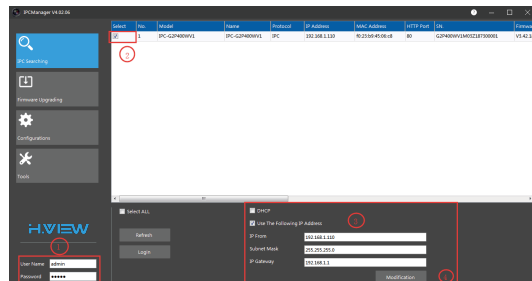
- 5.You can use the IPCManager tool to modify the camera's IP address and other configurations.

Why It says" Failed To Login" when you try to access camera via IPCManager Tool?

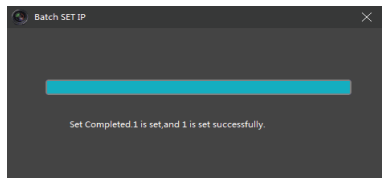
1. When you login camera on IPCManager Tool, Pop up a "Failed to Login" Window (as shows below)



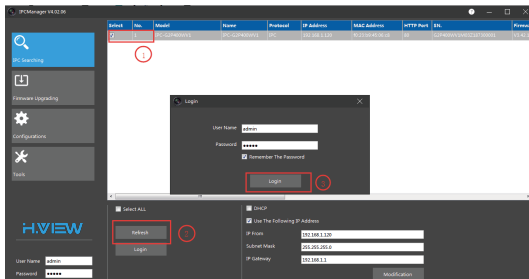
2. That's because of the camera isn't under your local network, you need change the IP address of camera. (All steps are shown as below)



- 1.Input the User Name: admin and The password: 12345 [Do not click Login]
2. Select the camera
- 3.Input the specific address which can match with your Local network
- 4.Click 'Modification ' to save settings. You will see a page as below which means the IP address be changed successfully.



5. Click Refresh then login the camera (As shown below)

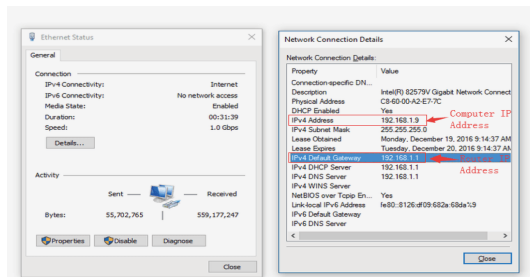


- ① Select the camera
- ② Click refresh to confirm the address be changed successfully
- ③ Username:admin Password:12345 Click Login to access the camera

FAQ: I don't know how to find the details of my local network, who can help me?

You can find it on your computer, please do as follow:

1. Open Control Panel
2. Once Control Panel is open, tap or click on the Network and Internet link
3. In the Network and Internet window, tap or click on Network and Sharing Center
4. In the Network Connection Details window, locate either the IPv4 Default Gateway or IPv6 Default Gateway under the Property column. (Same as below)



5. The IP address of the computer you are using will be listed under IPv4 Address, and the Router IP will be listed as the IPv4 Default Gateway. In our scenario, the router address is 192.168.1.1. So we want to find all the devices on this network starting from the Router IP.

6. Change IP address by using IPC manager tool

- IP From the first three octets of camera should be same as the IPv4 address (Router IP address) you only need to change the fourth octet. (eg: When The IP address of router is 192.168.1.1, the IP address of camera can be changed to 192.168.1.2)
- Subnet Mask - must match your network subnet mask as shown in above picture
- Gateway - must match your network Gateway / router IP as shown in above picture



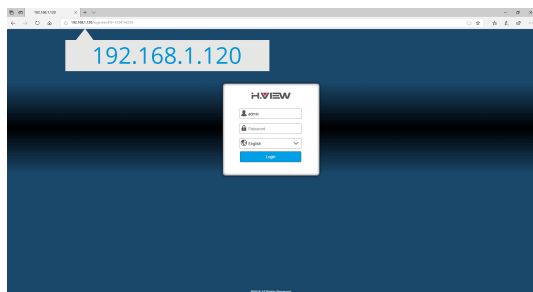
7. Click 'Modification' icon to save the IP address.

2.2 Local Web Access Setup

This method of accessing the camera's interface is necessary to setup remote access. Ensure that the following steps are completed.

- The camera is connected to the network via an Ethernet cable.
- The camera and the PC are on the same network.
- Use one of the following web browsers: Google Chrome, Mozilla Firefox, Safari, Opera, Microsoft Edge or Internet Explorer.

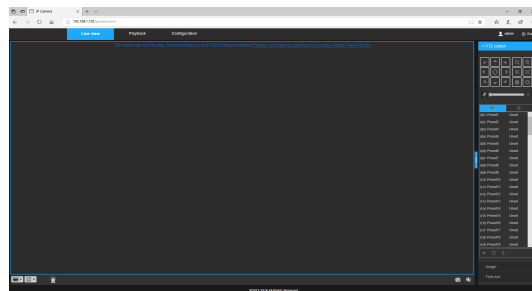
Please fill out the default username and password to log into the camera in the promoted page like below.



Username: admin Password: 12345

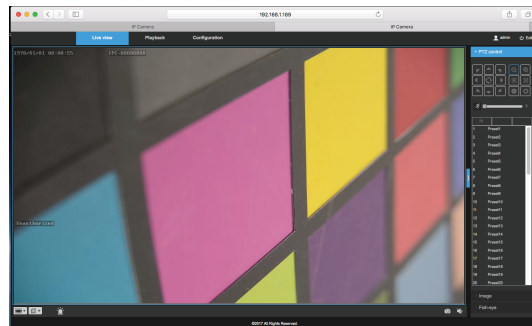
Note:

Internet Explorer: When opening the camera's interface, the browser may prompt you to install a plugin. The plugins are necessary for using the camera's interface. Click the download link to download the plugin, and then click on the plugin installation file to install the plugin. If the browser prompts you to allow the plugin to work on the computer, please allow to ensure the plugin can run successfully.



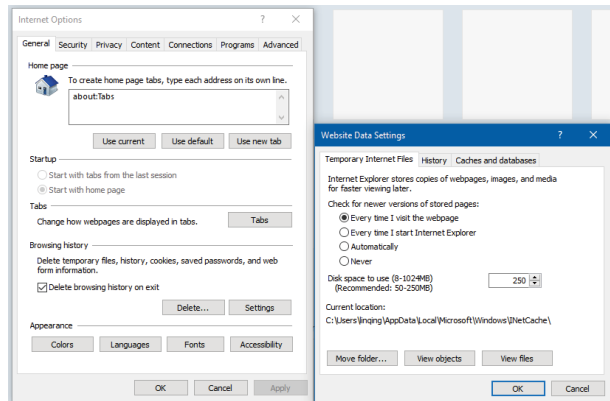
There is notification for the user to update the Plugin in Internet Explorer if the new firmware with new plugin is updated on the camera. Please follow the prompt to upgrade the plugin.

Google Chrome, Mozilla Firefox and Apple Safari etc. When opening the camera's interface, the browser may prompt you to install the Adobe Flash plugin. Please download the Flash plugin and install it. If you already installed the Flash plugin, there is no need to install it again.



It's strongly suggested that you change the following settings if you use Internet Explorer, which will help to speed up the IE access.

1. Please select "Internet options";
2. In "General" tab, please click "Settings" in Browsing history item;
3. In "Temporary Internet Files" tab, please select "Every time I visit the webpage" in "Check for newer versions of stored pages:" like the below:

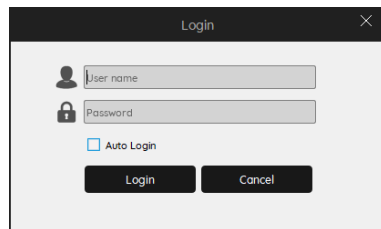


detailed operating instructions can be obtained from the CD which come with the package, or search it in our official website to download:
www.hvviewsmart.com

OS supported:  Windows  CentOS  ubuntu  MacOS

3: CMS Software-Live View

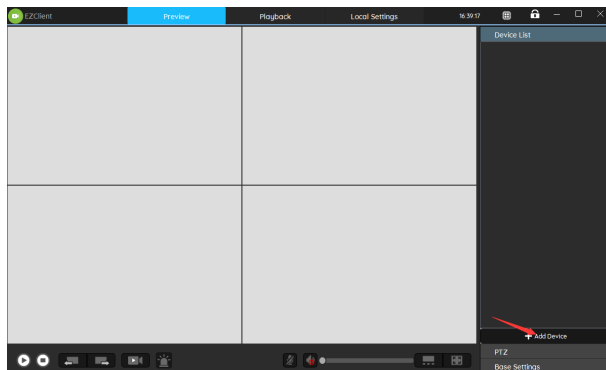
- 1: Install EZClient
- 2: Login to EZClient



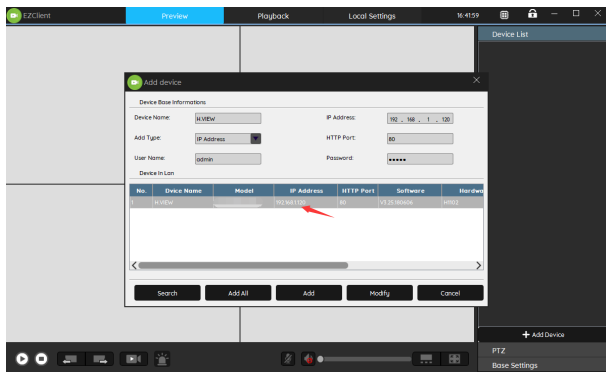
Username: admin

Password: 12345

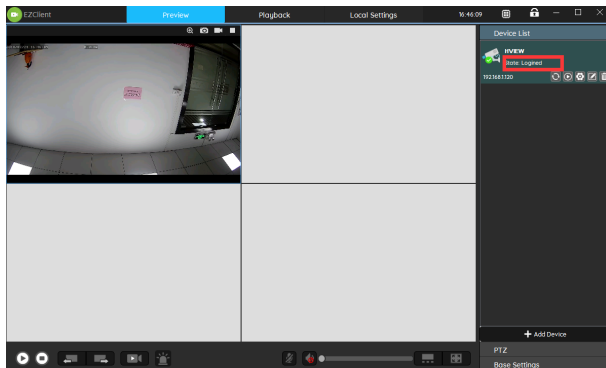
- 3: Add camera locally
- 3.1 Click "ADD DEVICE"



3.2: Select the camera that was automatically searched and click "ADD".



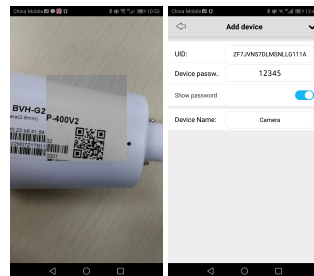
3.3 If the camera is displayed online, the local addition is successful, double-click the added camera to display the video.



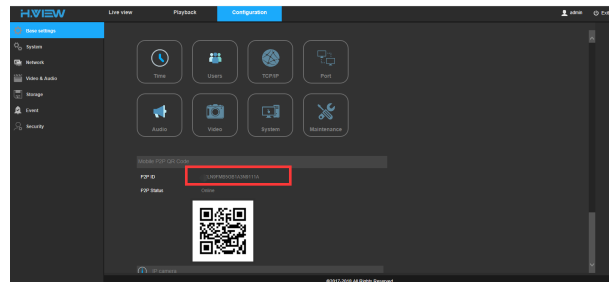
4: Add via remote P2P ID

4.1: Get the ID number

4.1.1: Get the ID by scanning the QR code on your camera with your app EZvision

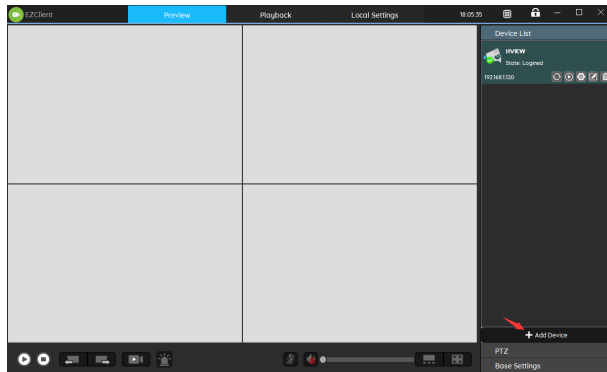


4.1.2: Log in to the WEB interface via the camera's IP address to get the ID.

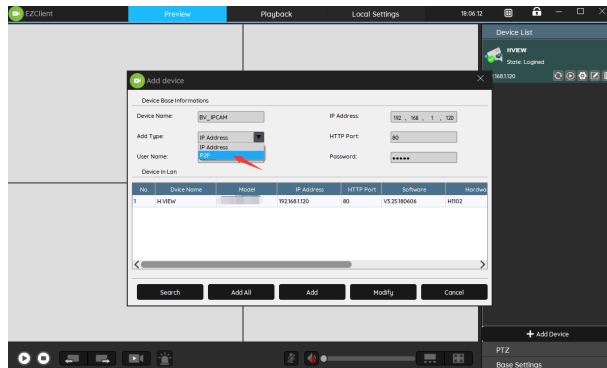


4.2: Add camera to EZClient with ID

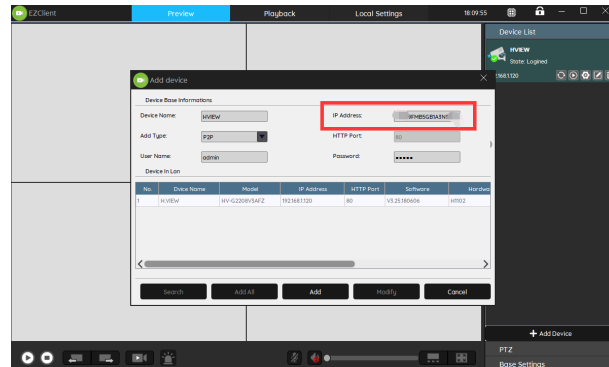
4.2.1: Click the "ADD DEVICE"



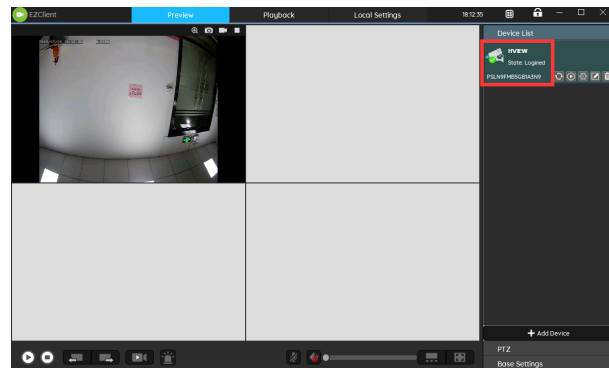
4.2.2: Change "Add Type" to "P2P"



4.2.3: Enter the ID into the IP Address field, enter the camera's username and password, then click "ADD".



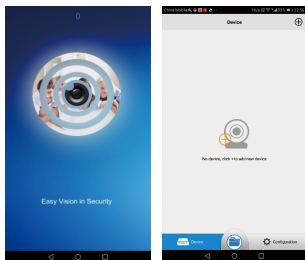
4.2.4: Double-click to add the camera and the interface displays the video.



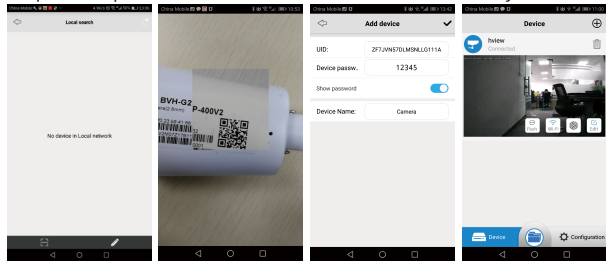
4: Accessing the camera using Smartphone/tablet

a. From your smart device (Android phone/tablet, iPhone/iPad), search EZVision in the Play Store/App Store.

b. Install and open the App to see the below screen:



c. Tap on the top "+" icon or the icon in the middle of the screen to add your camera.



- Select "QR code to add" like the below.
- Hold your phone steady until the app can read the code on camera body. Make sure the QR code fits inside of the clear box in the middle of the phone screen. Your phone will take you back to the previous page when the scan is successful. (Note: If the QR code is not present on the camera body, please log into the camera's web interface to access the QR code)
- Enter the default password of camera is 12345, Name your camera as requested, click "✓", wait for the app to load the camera and display live video.

detailed operating instructions can be obtained from the CD which come with the package, or search it in our official website to download:

www.hvnewsmart.com

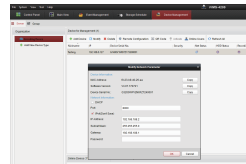
5: Third Party Device and Software Setup

HIKVISION NVR and CMS client software like iVMS-4200 can add the camera using "HIKVISION" protocol or ONVIF.

1. IP Camera Address: please modify the address to be on the same IP segment as HIKVISION NVR LAN port or the computer running iVMS-4200.
2. Select Protocol "HIKVISION" or ONVIF.
3. Management port: 8000 for HIKVISION or 80 for ONVIF.
4. Fill out the camera's username (admin) and password(12345).



HIKVISION NVRs



HIKVISION iVMS

ISPY 6.8.2.0

Type: FFMPEG

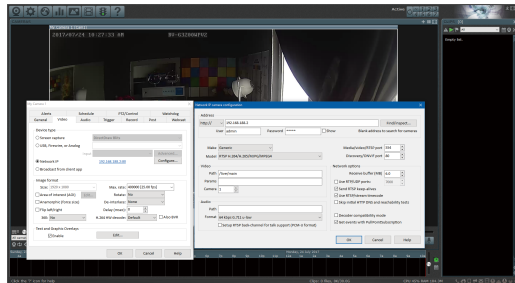
Protocol: rtsp://Path/h264

Audio: supported

URL for mainstream: rtsp://IP address:554/live/main

Blue IRIS 4.5.8.6

NOVIF: http://IP address:80/



General Settings:

1: System Time

Open the Web Page which you used to log in camera via IE Choose Configuration - Time - Time Zone - Sync with PC time - Save.

2: Set Email Alarm for Motion Detection

2.1 Add Email Account: Open the Web Page which you used to log in camera via IE, Choose Configuration - Network - SMTP

SMTP server: smtp.gmail.com

Authentication: SSL/TLS

Port: 465

User name: username@gmail.com

Password:

Sender:

Recipient email 1:

Recipient email 2:

Recipient email 3:

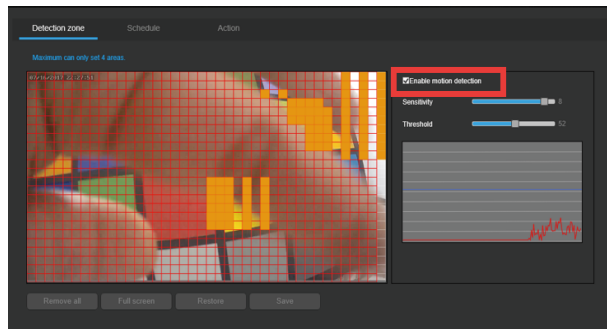
Recipient email 4:

Test

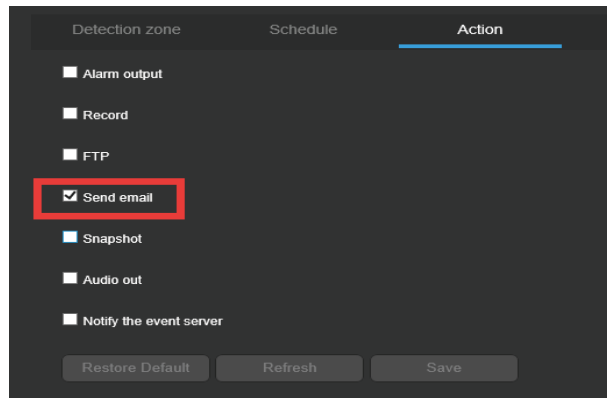
Restore Default Refresh Save

- SMTP Server: smtp.gmail.com
- Authentication: SSL/TLS
- Port: 465
- Username: Input the Username of Gmail account
- Password: Input the password of your Gmail account
- Sender: Input the email address of Gmail account
- Recipients: Input the email address which you want receive alarm messages.
- Test: This button allows the system to send out an email to test the connection. Prior to the email test, please save the email setup information.
- Click 'Save' to save all settings you entered.

2.2 Enable Motion Detection: Choose Configuration - Event - Motion detection.



2.3 Set Email Alarm : Choose Configuration - Event - Motion detection- Action.



3: RTSP Settings.

3.1 Open the Web page which you used to login to camera via IE, Choose Configuration - Network - RTSP. This tab allows the user to modify the settings for RTSP including RTSP authentication, and RTSP multicasting. Multi-cast is a feature that enables the camera to broadcast its live view to multiple computers on the same network.

RTSP

RTSP information

Authentication: Enable

Main stream: rtsp://192.168.1.120:554/live/main

Sub stream: rtsp://192.168.1.120:554/live/sub

RTSP Multicast

Enable multicast: Enable

Multicast address: 224.0.0.1 [224.0.0.1-239.255.255.254]

Port: 10000 [10000-50000]

TTL: 64 [64-255]

Restore Default Refresh Save

- RTSP authentication: Enable
- Main stream: rtsp://192.168.1.120:554/live/main
- Sub stream: rtsp://192.168.1.120:554/live/sub
- Enable multicast Enable
- Multicast Address; This field allows the user to enter a multicast address.
- Port This field allows the user to enter a multicast port.
- TTL This field allows the user to enter a multicast TTL value.

4: NAS Settings

4.1: Open the Web page which you used to login to camera via IE. Choose Configuration - Storage - NFS.

NFS

Enable: Yes

Server address:

Remote path:

Status: Unmounted

Restore Default Refresh Save

Enable: choose Yes.

- Server address: Put the Server address of NAS which displays when users logs in NAS.
- Remote path: This field allows the user to input the storage path which should be created in the NAS device.
- Status: It's the NAS device connection and work status.

4.2: Configuration - Storage - Schedule-Destination- NFS.

Base settings

System

Network

Video & Audio

Storage

Local settings

Disk

FTP

NFS

Schedule

Record Snapshot FTP upload

Enable: Enable

Pre-record: 0 Seconds

Stream: Main stream

Destination: NFS

Override: Enabled

Record package: 5 Minutes

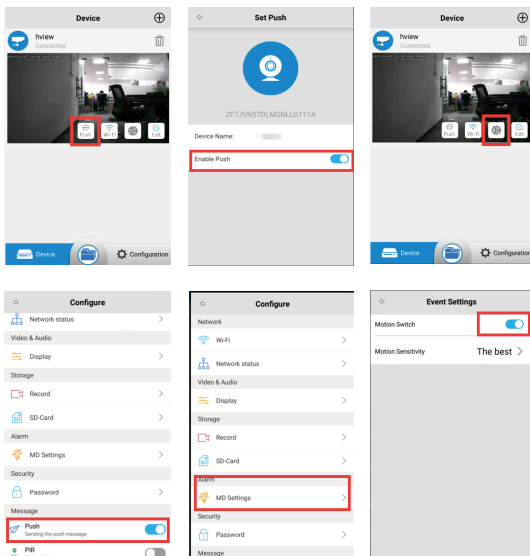
Schedule

Restore Default Refresh Save

6: Use APP to Set Motion Detection alarms, Record, Playback

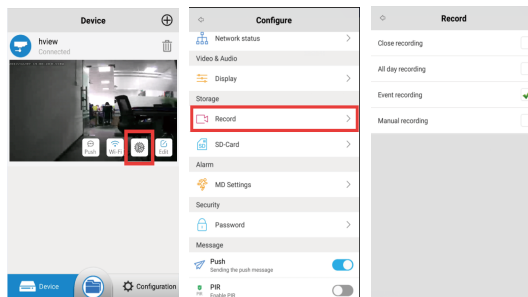
6.1 Set Motion Detection Alarms

Login to APP, Click Push-Enable Push, Click Settings-Push-MD Settings-Motion Switch.



6.2 Set Record via APP (It will available only under HV-403G1-32G\HV-400G2-32G)

Login to APP Click 'Setting' → Record, There are 4 recordings models, Close / all day / Event / Manual record.



6.3 Playback Via APP (It will available only under HV-403G1-32G\HV-400G2-32G)

Login to APP, Click video - Then you will see Preview and play back on top of screen, click Playback. Choose the specific recording to playback.

