

# H.VIEW Hybrid CCTV Security Camera DVR USER MANUAL



[Http://www.hviewsmart.com](http://www.hviewsmart.com)

# Contents

<b>Overview.....</b>	<b>3</b>
<b>Installation.....</b>	<b>4</b>
<b>Log in &amp; Log out.....</b>	<b>7</b>
<b>Hard drive setup.....</b>	<b>8</b>
<b>Motion detect.....</b>	<b>9</b>
<b>Privacy Mask.....</b>	<b>10</b>
<b>Email setup.....</b>	<b>10</b>
<b>Network Status.....</b>	<b>11</b>
<b>Record Setting.....</b>	<b>12</b>
<b>Video Playback.....</b>	<b>14</b>
<b>Web viewer.....</b>	<b>15</b>
<b>Mobile phone / IPAD viewer.....</b>	<b>16</b>
<b>CMS Viewer.....</b>	<b>18</b>

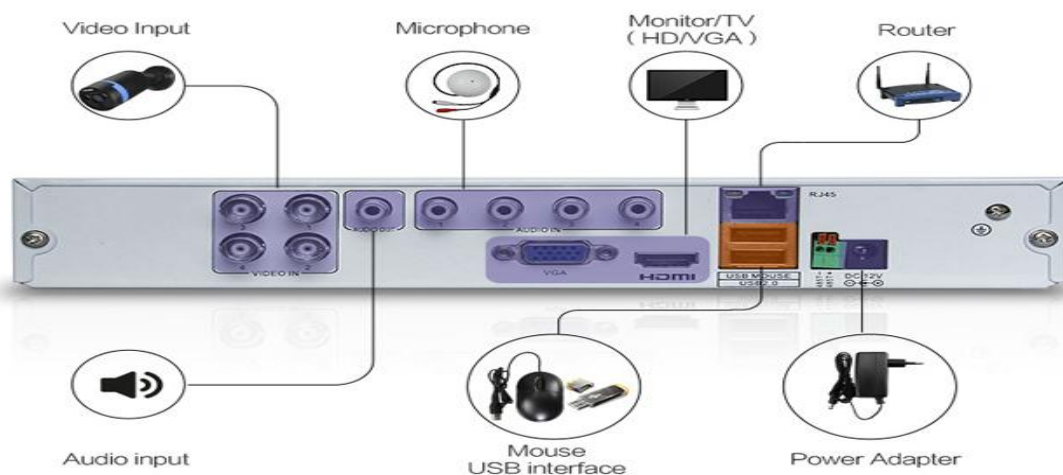
# Overview

## Before installation

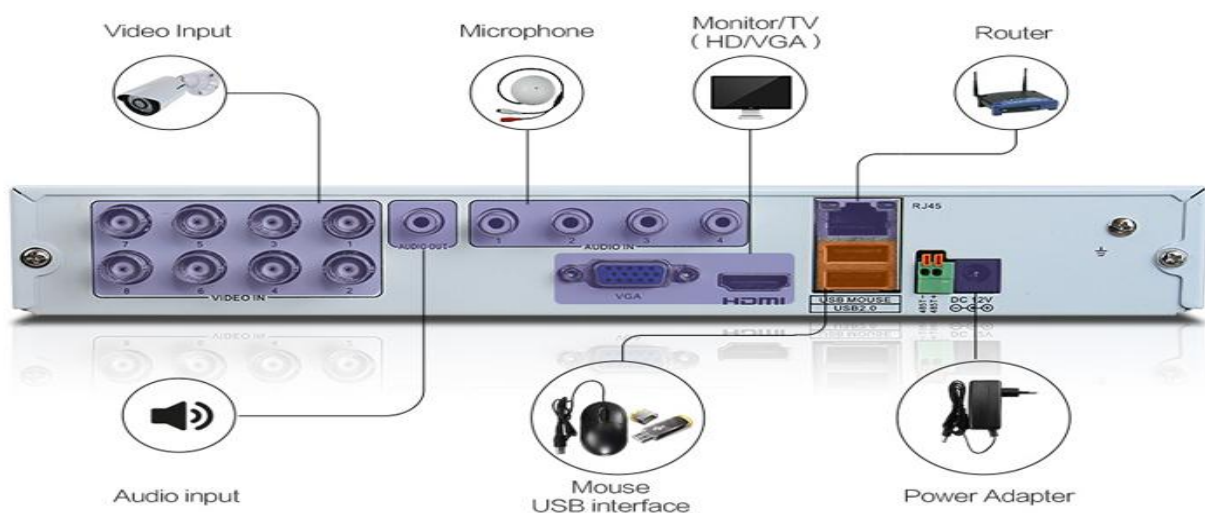
- Remove the power supply module before proceeding.
- Check the input voltage to the power supply module before connecting it.
- Keep the product away from humidity.
- Ensure that all devices connected to the product should be properly earth-grounded.

## Rear Panel

### 4 channels



### 8 channels



✓ Select one from VGA/HDMI before outputting the video

✓ Since the cable quality may affect directly to the video quality depending on the distance between the camera and DVR

## Installation

### Connecting to an external device

This product supports 1080p 60 Hz HDMI monitors and regular monitors that support DVI and VGA inputs. Connect an HDMI cable to the port on the product 's rear bottom, Or use VGA cable to connect the product with a VGA monitor.

◆ Once the product is set for NTSC or PAL output, connect cameras of the corresponding Video standard for proper operations.

### Power Connection

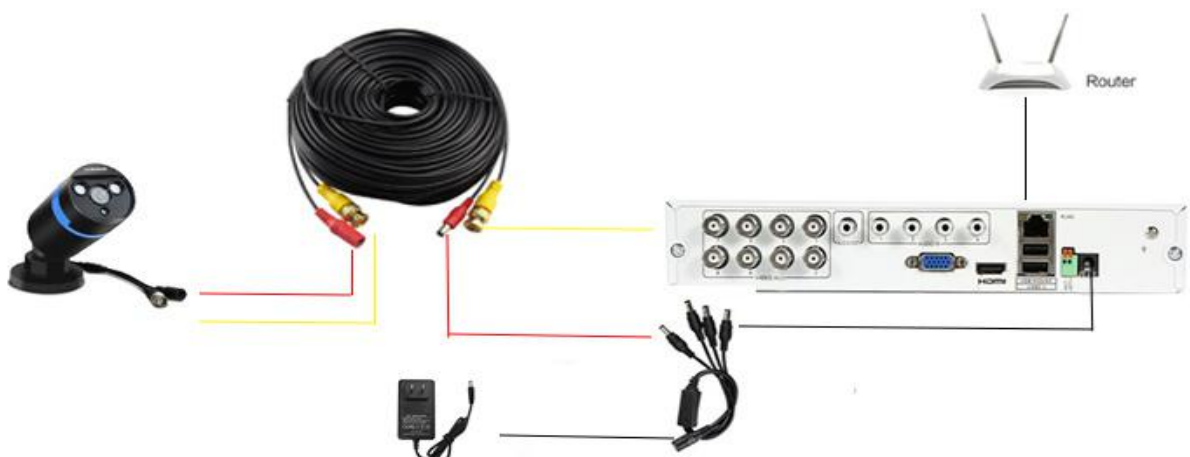


✎ For stable operation of the product, it is recommended to use the provided adapter.

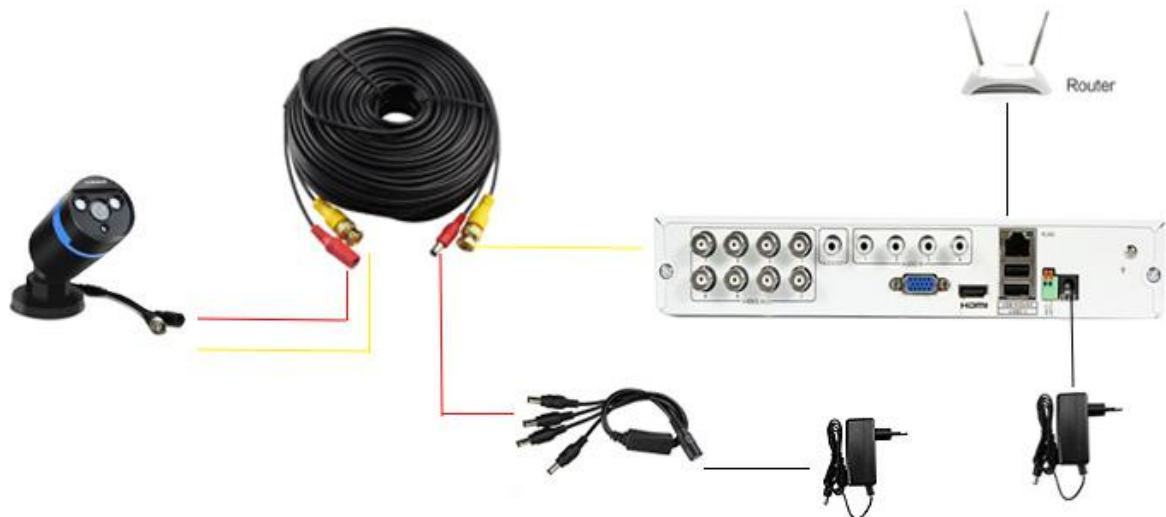
✎ Arrange up the cables and be careful not to peel off the cable coating.

### Camera and DVR recorder Connection

#### 2 Cameras system



#### 4 cameras system (Include 8 Channels and 4 channels)



There is Label on Video cable ,”Only for DVR” & “Only for Camera”,please choose right port when you connect cable

1-4 Splitter be used to power camera, connect one port of 30M Video cable with 1-4 Splitter

There are 2 adapter included in package,One is used to power DVR recorder ,one is used to connect with 1-4 splitter to power 4 cameras you received.



You must connect Internet cable with DVR,then you can remotely view via Mobile

Phone and PC.

## 8 channels & 8 cameras system

If you bought 8 channels & 8 cameras system ,you will receive :

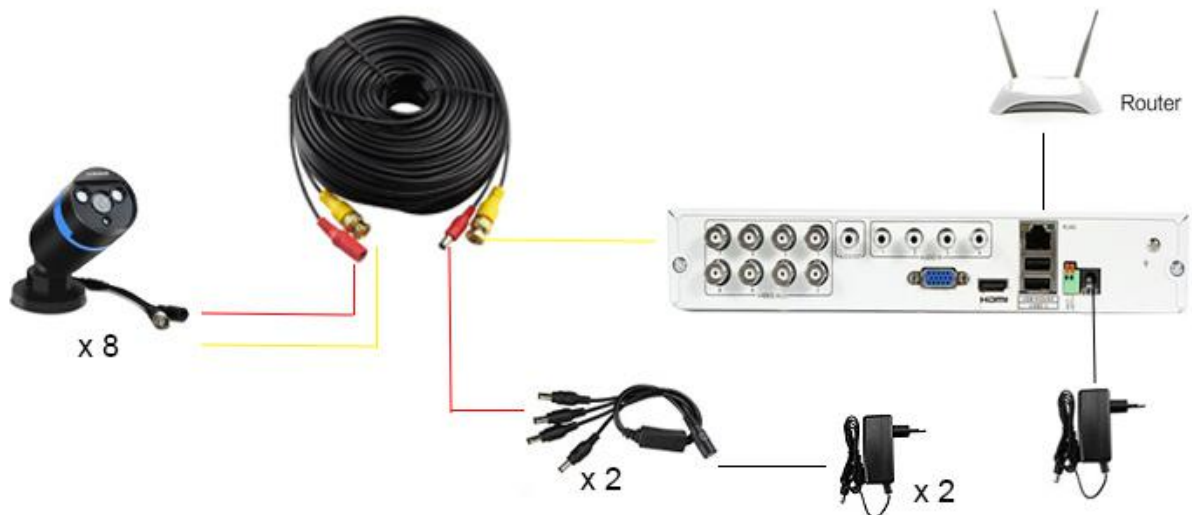
- \* 1 x 8CH AHD DVR
- \* 8 x CCTV security Cameras
- \* 8 x 60ft Power Video Cable
- \* 2 x 1-4 splitter cable
- \* 3 x 12V DC Power Supply
- \* 1 x Remote Control
- \* 1 x Mouse



Connect the RJ45 port in the rear panel to the router



You can connect DVR to a PC or mobile device in the same remote network and control or manipulate it on the monitor of the PC or mobile device



## All connections



## Log in & Log out

### Log in

To manipulate or access the menus of DVR, you should have logged in.

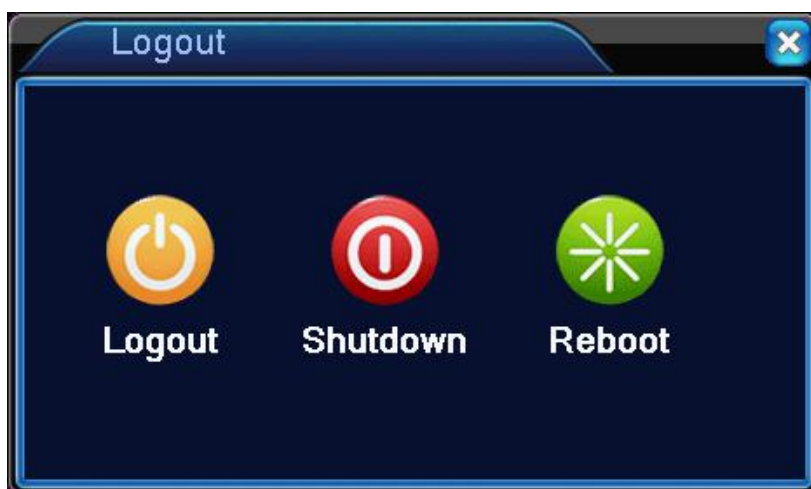
1. When the system starts, the log in screen appears
2. Select a user and provide the password. The default User Name is "admin", password is "blank" (**leave it null**)
3. Click <OK>. You will access the system



### Log out

To prevent unauthorized access, it is recommended to log out when you leave the screen.

1. In the monitoring screen, click <MENU> in the bottom left corner of the screen to <LOG OUT>.
2. While logged out, Search / Backup / System Settings / Record Settings / Exit menus are restricted to use.

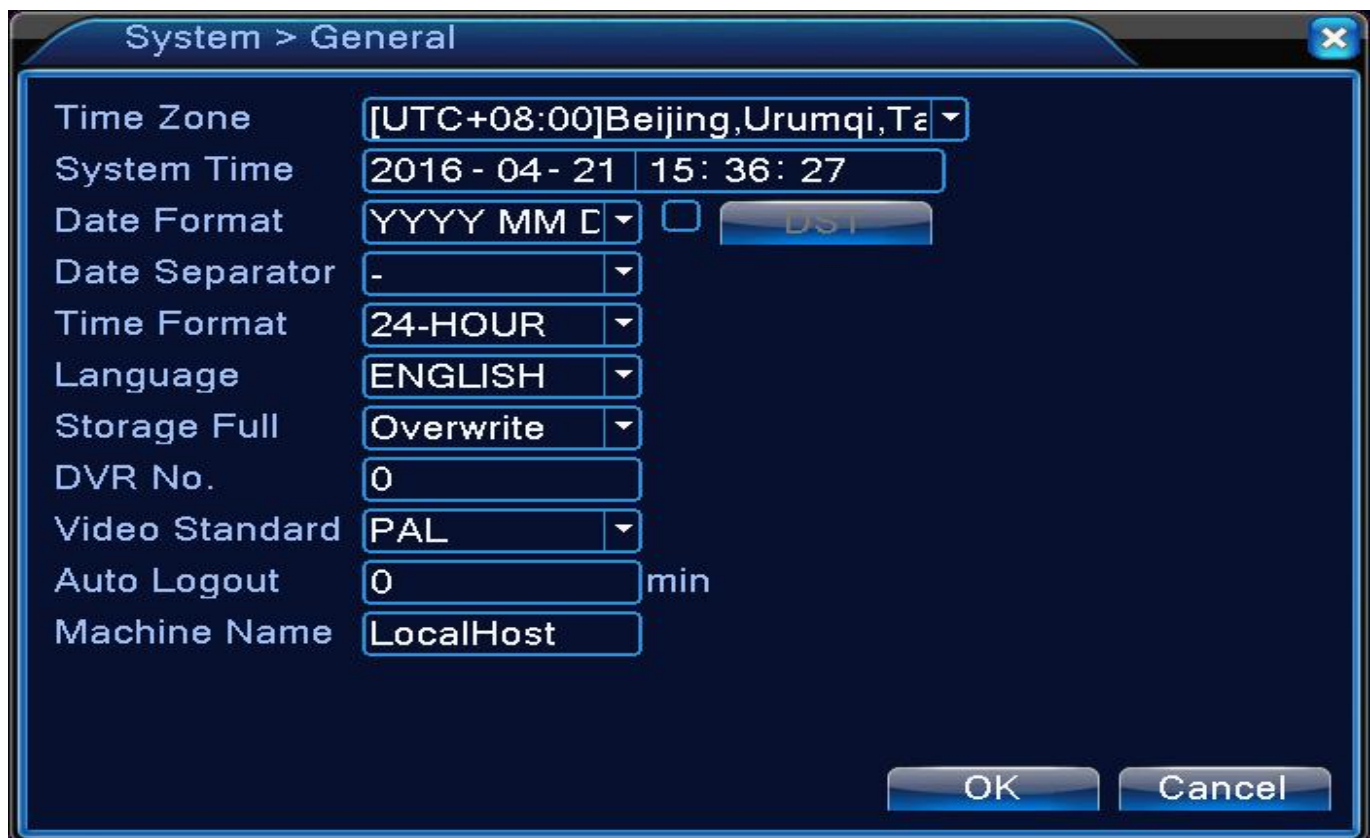




## General Setup

You can set time zone, Date and language storage in this page.

1. **Time zone** : specify the GMT standard time for your local area.
2. **System time**: Set the current time and date
3. **Language**: specify the language of your local area
4. **Storage Full**: Set<Overwrite> means system will continue recording video and will cover the former data when hard drive is full
5. **Auto Logout**: If you set “0” which means you don’t set up any standby time

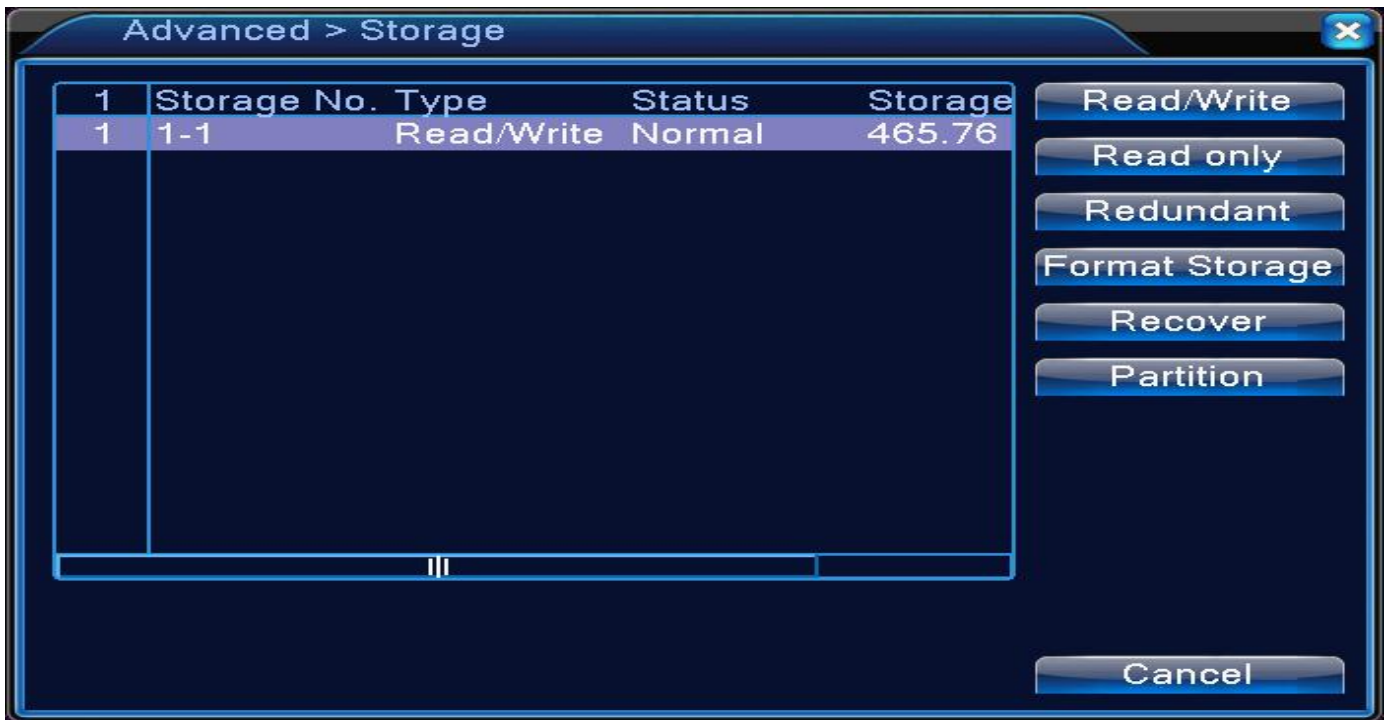


## Hard drive setup

You can set to delete the recording automatically and set the overwrite options, and you can also format the HDD recording data.

1. From--[Main menu]--[Advanced]--[Storage]





2.Choose <Format Storage> before you using hard drive

- Before setting hard drive you need confirm if the hard drive has been connected successfully.
- System will automatically overwritten the former data when hard drive is full ,if you need change model of recording ,please check 【General setting】

## Motion detect

Set the motion sensor of the camera so that it can detect a motion event.

1.From <Main Menu> - <Alarm> - <Motion Detect>

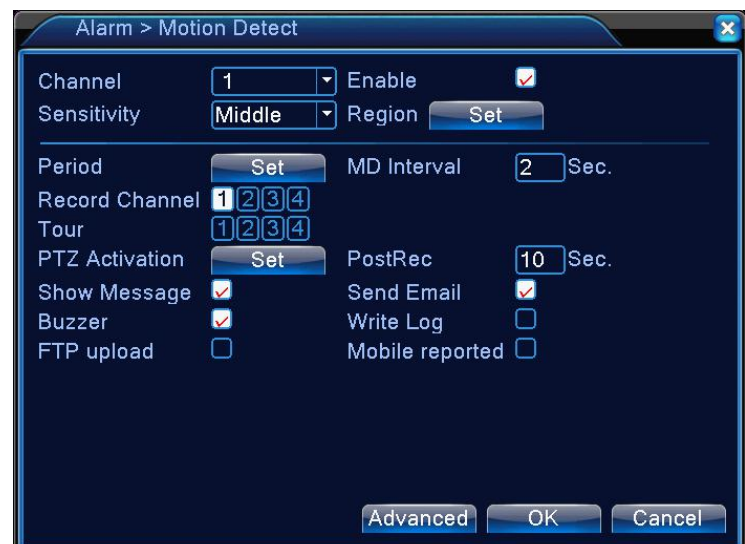
2.Use the mouse to specify the use of each option item

> **Channel** : Choose channel you want set motion detect

> **Enable** : turn on the motion detect

> **Sensitivity**: Set the sensitivity level of the motion sensor

> **Region** : Specify the motion detection area.



- > **MD interval** : Specify the interval of motion detect
- > **Record channel**:Specify the channel which will record when motion be detected
- > **Choose suitable push approach**:Show message,Send email,Buzzer,Write Log,FTP upload,Mobile reported

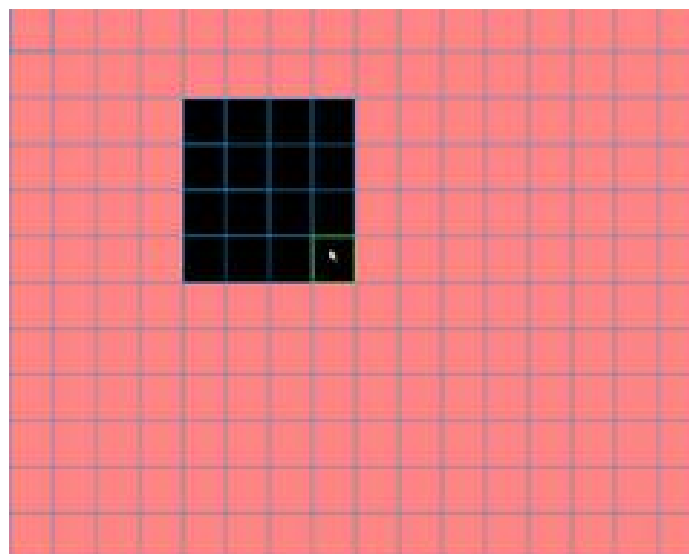


The motion detection sensitivity may differ depending on the characteristics of the connected camera or the installation environment.

## Motion area setup

From the motion detect window,click<Region>in the right corner to display the area setup screen

- Click <Region> to move the motion detect area setup screen
- Press and hold the left mouse button and drag to select /deselect your desired area
- Right-click any area to display the popup window as in the right picture.
- While the popup window is displayed,Left-click area to mask color the area you want set motion detect,area with no color is where you set.
- Click any area back to interface page.



## Privacy Mask

You can edit privacy mask settings and privacy masking areas for video from each camera.

### Enabling Privacy Mask

- From <Main menu> -- <system> -- <display> ---< region cover>
- Use the mouse to set channels enabled
- Click Set,you will see a black box in the monitor screen,drag box to select your desired area..
- Right-click mouse ,windows will back to previous page
- To apply the change,click<OK> in the bottom of the screen
- When done, click <CLOSE> in the lower screen to return to the previous menu.

Recorder

## Email setup

You can register and test an email address so that an email notification is delivered at a specific interval or if an event occurs.

1. From <Main Menu> - <System> - <NetService> ,Select <EMAIL>

2. Use the mouse to specify the use of email and select

> **SMTP Server**:Set up the mail server.

Set the mail server that will be used for notification to the DVR.

Use the virtual keyboard to enter your mail server.

>**Port**: Enter the mail server port.

>**User name**:Provide the email account (ID) of the sender.

>**Password** : Provide the password of the sender.

>**Sender**:Provide the email account of the sender

>**Receiver**:Provide the email address of

>**Mail Testing**: Send a test email and check if the test email is delivered normally

3. To apply the change, click <OK> in the bottom of the screen.

4. When done, click <OK> in the lower screen. The confirmation message appears and you will return to the previous menu.

## Network Status

From the network map screen, you can check the internet connection status and camera connection status, and check also the details of the connection status for each camera.

### 1.Check Internet status

From <Main Menu> - <Info> - <Version>  
Check Nat status of device.

- <Connected>:Means Network connection is successful
- <Probing DNS>: Network connection is lost

## 2. Network Map

>Net Card:Choose specific Net card

>IP address : Indicates the internal IP address of the DVR.

>Subnet Mask:provide the subnet mask address(Default:255.255.255.0)

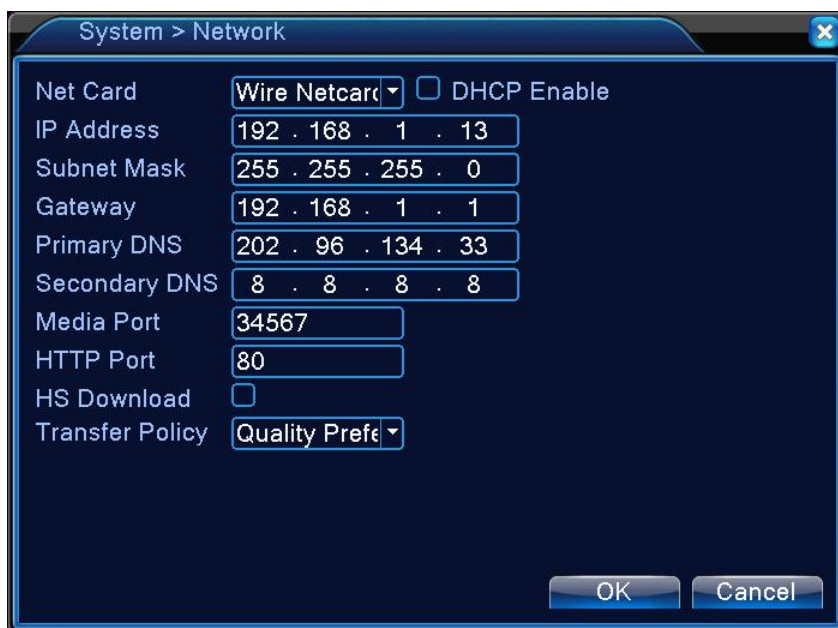
>Gateway:provide the gateway address (Same IP address as your router IP address)

>Primary DNS:Enter the address of the primary DNS server

>Secondary DNS:8.8.8.8(Enter the address of the secondary DNS server.)

>Media Port:34567

>HTTP Port:80



3.To apply the change,click <OK> in the bottom of the screen.

4.When done, click <OK> in the lower screen. The confirmation message appears and you will return to the previous menu.



**If you don't know how to change set network of recorder ,please check**

## FAQ

### Record Setting

#### Operation Mode

You can set the recording options for Auto or Manual mode.

1. From <Main menu> -- < Record > select <Record Conf>.

2. Set the recording options for each selected Record mode.

3. To apply the change, click <OK> in the bottom of the screen.

4. When done, click <OK> at the



	Regular	Detect
Period 1	<input checked="" type="checkbox"/>	<input checked="" type="checkbox"/>
Period 2	<input type="checkbox"/>	<input type="checkbox"/>
Period 3	<input type="checkbox"/>	<input type="checkbox"/>
Period 4	<input type="checkbox"/>	<input type="checkbox"/>

bottom of screen. The confirmation message appears and you will return to the previous menu

## Configuration

- > **Channel** : Choose specific channel to record
- > **Length**: Set the length of per video file.Default length is 60min
- > **PreRec**:Set up the period of record
- > **Period**: Set the period of record (Default period is 24-hours,for all channels)
- > **Detect**: Recording will proceed only if a motion is detected(If need system record when detect motion,you need set "Motion detection",check "motion detect")

## Motion detect setting

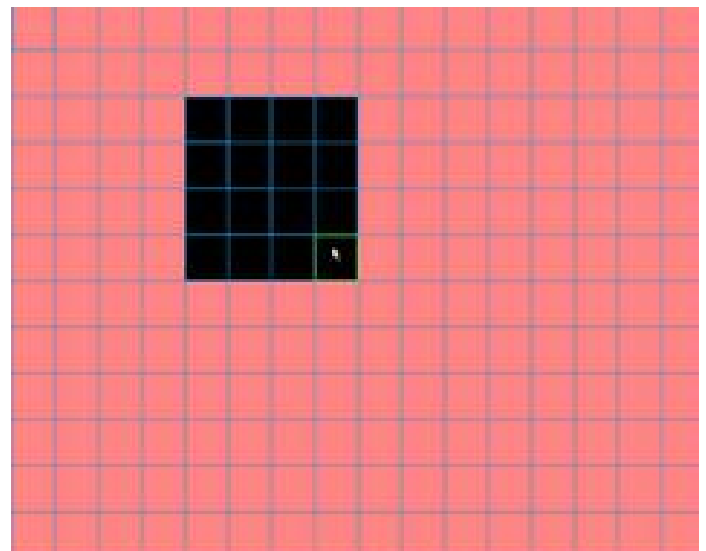
### Tick "Enable"

select < Sensitivity >, < Region >, < Record Channel >, < Buzzer >, < Send Email > according to your needs and click "OK" to save.



Click set to set region, default is all choosed.












You can change the region by right click your mouse, drag the mouse and draw the area.



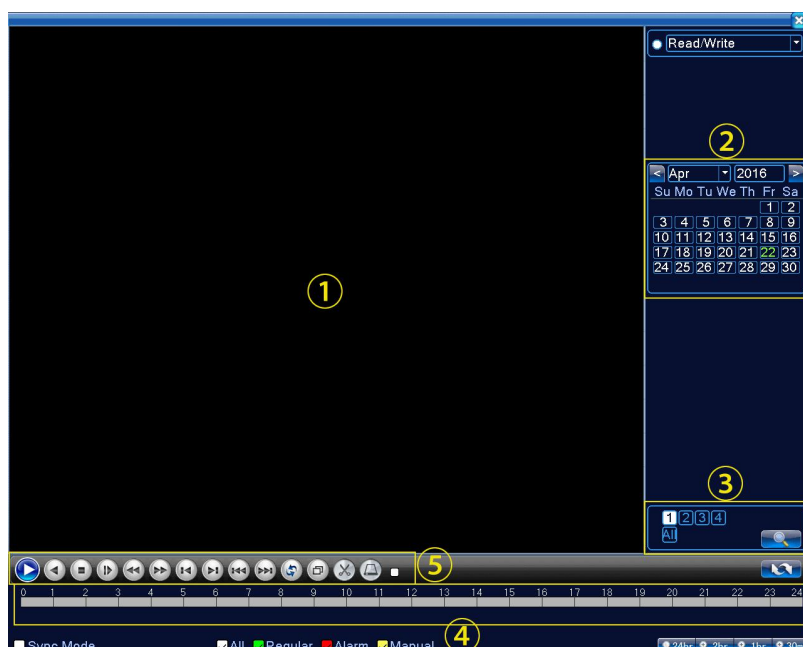


# Video Playback

## Using the play bar

	Start Playback		Play backward
	Stop Playing		Slow Playback
			Prev/Next Frame
	Prev/Next File		Repest playback
	Full Screen		Start Editing
	Backup		

- ① Video Playback Region
- ② Video date query,color filled represent containing video content
- ③ Playback Channel Optional
- ④ Video Playback time
- ⑤ Playback control key



**Note:** Different color means dofferent recording,motion detection recording is red one on bar



## Web viewer

### Connection

Open a browser and type the URL in the address bar **http://www.xmeye.net**

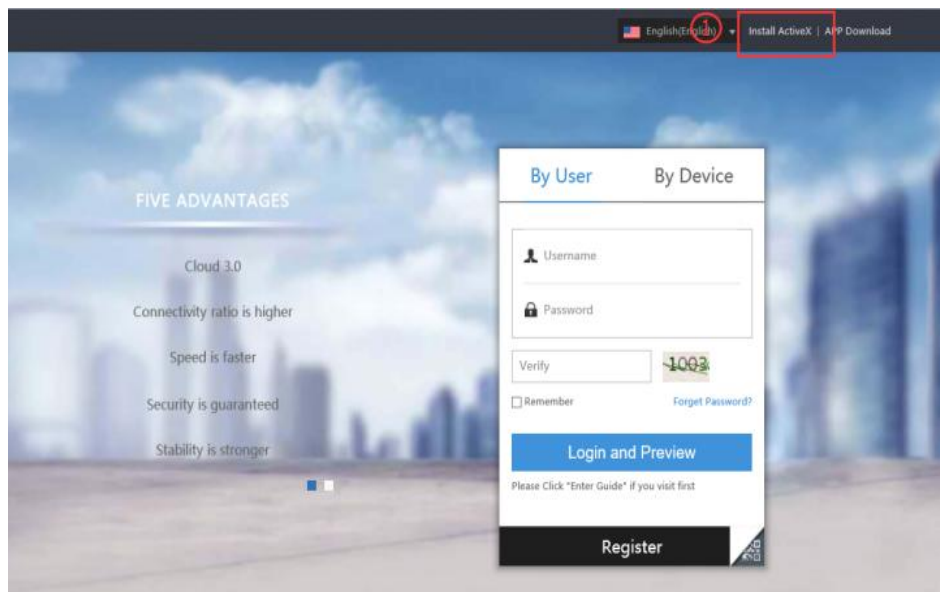


After you enter the URL and you will see the live screen

① Click the upper warning bar to install the ActiveX

② Click <Install>

**NOTE:** If you failed to install the ActiveX control, move to  
<Tools>---<Internet  
Options>---<Security>---<Trus  
t Sites>---<Add> add  
<http://www.xmeye.net> to your  
security site



## Log in

There are 2 ways of log in, <By User> & <By Device>

### 1.By User

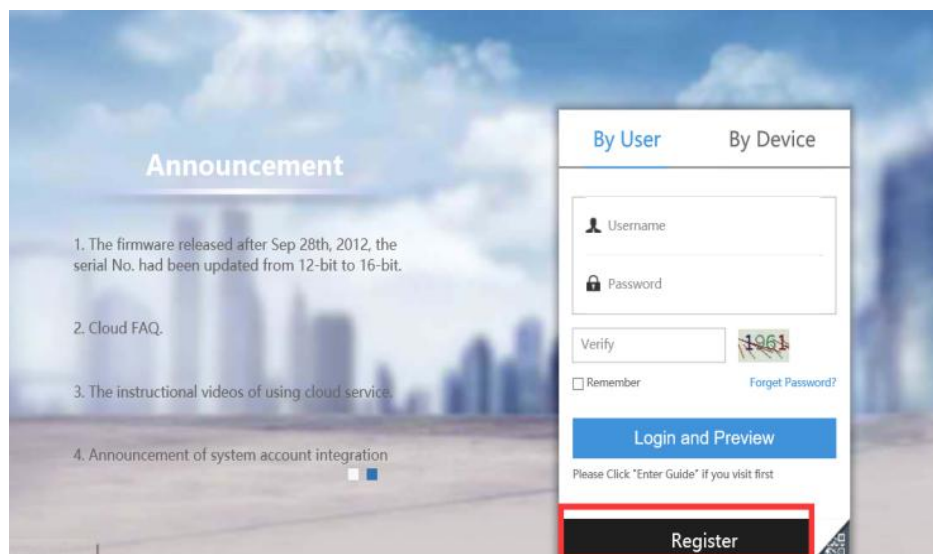
Before Logging in with User name, you need register .

① Click <Register>, at

corner of screen

② Type all information in

register page

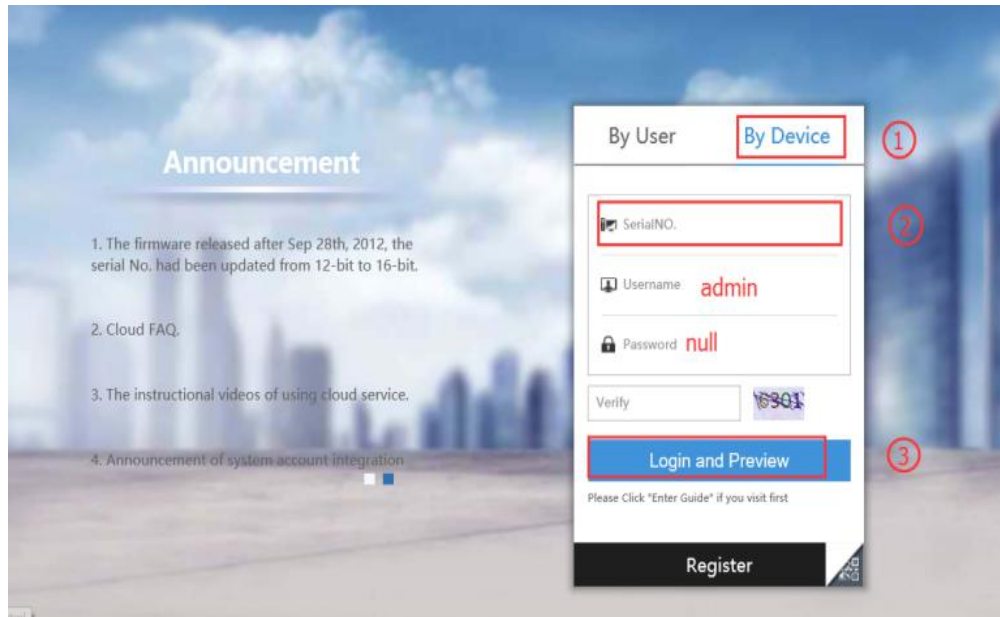




## 2.By Device

Find device Serial number  
in monitor

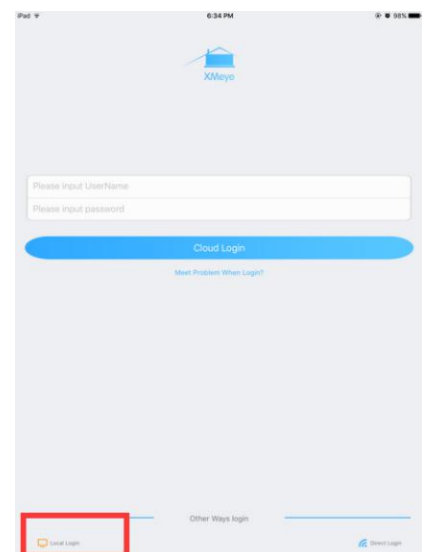
- ① Type Serial number
- ② Default User name:  
**admin**  
**password:null**(leave null)
- ③ Click<Login and  
Preview>



## Mobile phone / IPAD viewer

You can use your IPAD to remotely view your device. Please so as follow:

- Download “XMeye”in APP store
- Open “XMeye”,you will see the picture such as bellow: Click <Local login>



- You will see the log in page,such as bellow
- Click <+>at right corner of screen to add device into your APP



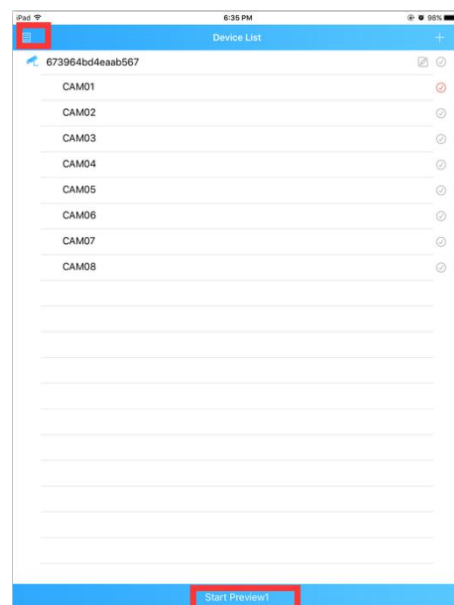
At this page ,you need type your **serial number** and password.

The default user name: **admin**

Password: null (**leave it blank,don't type any words**)

There is no need to enter device name and http port

- After doing as above,you can see your device
- You can choose specific CAM to view your device
- After click channel click"Start Preview"



Now you will see video .Hope it can helps.



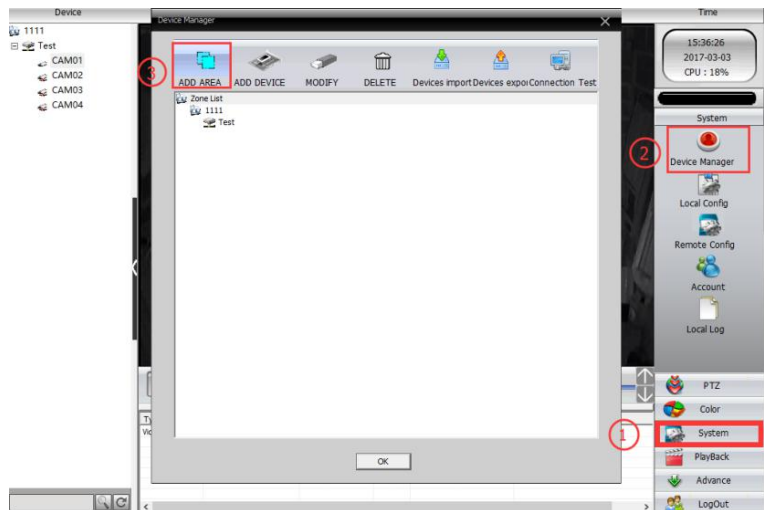
## CMS Viewer

### Install

Running disc (Included in package),open  
“CMS”and install it.

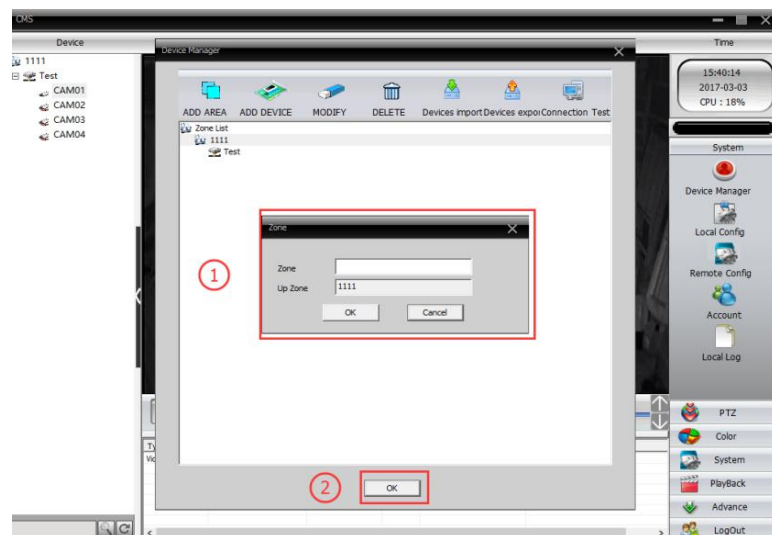
Open the “CMS” client .

- ① Click”System” at the right corner of screen
- ② Click”Device Manager”
- ③ Click “zoom list”,then click “ADD AERA”



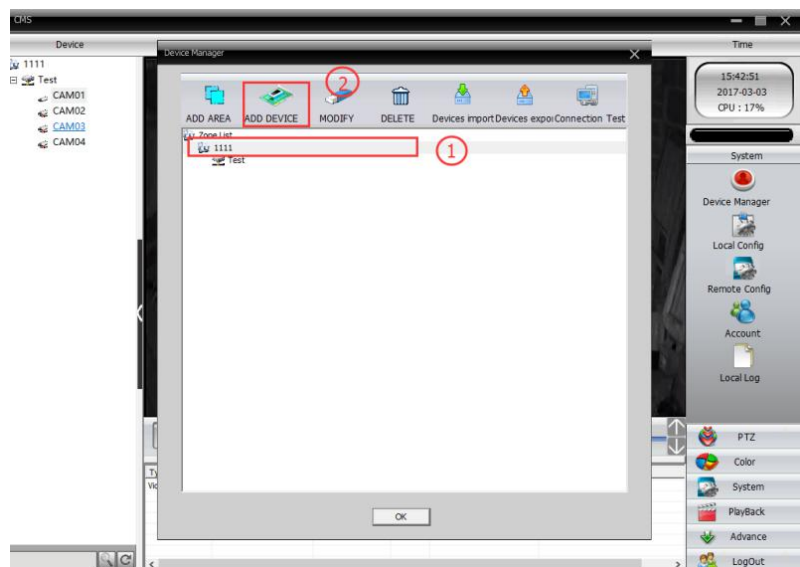
At this page,you need type data of zone and up zone

- ① You can enter any words you like,such as “111”
- ② When you finished,click”OK”



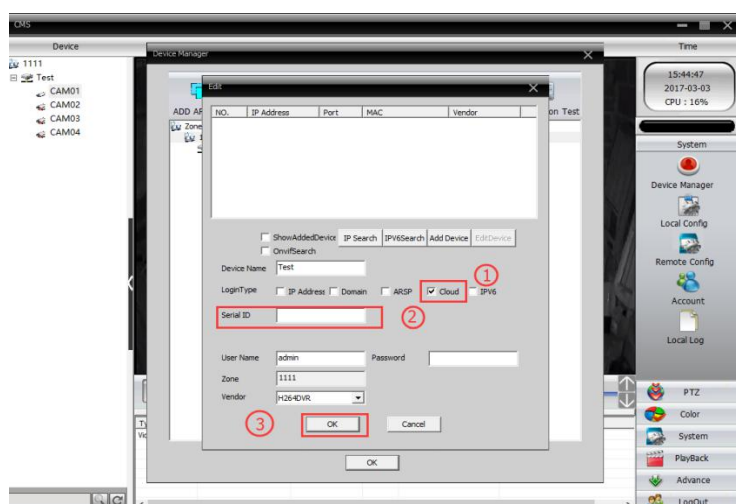
- Now you need add your device into “CMS”

- ① Click “zone”(You edited at step 2)
- ② Click “ADD DEVICE”



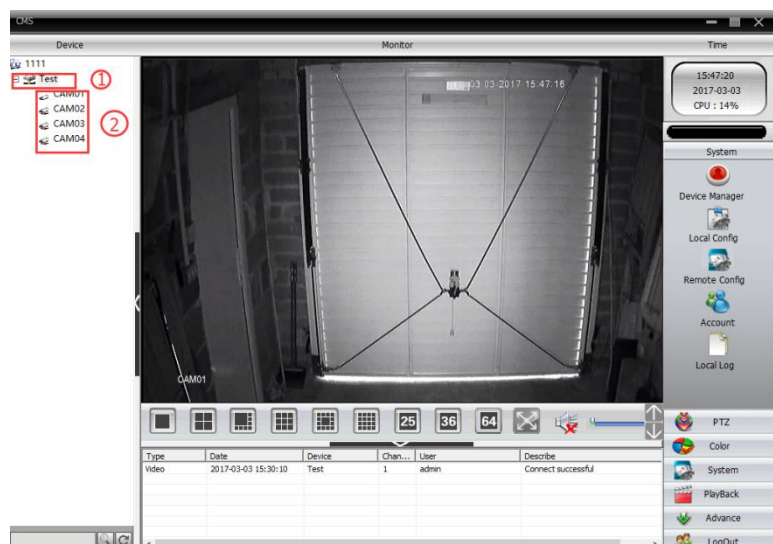
- At this page, you need type some data of your device

- ① Choose Cloud
- ② Type serial number of recorder
- ③ Click "OK"



- Choose specific CAM and view it

- ① Click "Test"
- ② Choose CAM you want view



- Congratulations.

